

# CLIMATEK LUXURY

design oltre ogni limite



Finestra in alluminio dal profilo squadrato che segue le tendenze minimali abbinando elevate prestazioni termiche.

Conferisce maggiore risparmio energetico agli immobili in cui è installata e una maggiore protezione agli ambienti. Ideale per edifici che richiedono un efficientamento energetico superiore (edilizi NZEB, case passive, immobili in classe A) e per ristrutturazioni edilizie di primo livello.

**TERMIKA**  
The Insulator Window

Aluminum window with a square profile that follows minimal trends by combining high thermal performance. It gives greater energy savings to the buildings in which it is installed and greater protection to the environments. Ideal for buildings that require higher energy efficiency (NZEB buildings, passive houses, class A buildings) and for first-level building renovations.



Technical data

# CLIMATEK LUXURY

Scheda Tecnica

- Anta Minimale a scomparsa
- cerniere a scomparsa
- triplo vetro di serie
- maniglia a scomparsa in tinta

Trasmittanza termica profilo fino a  $U_f = 0,71 \text{ W/m}^2\text{K}$

Permeabilità all'aria fino a **Classe 4**

Tenuta all'acqua battente fino a **Classe 1650**

Resistenza al vento fino a **Classe C5**

Antieffrazione fino a **RC3**

Insonorizzazione fino a **46db**

Profile thermic transmittance up to  $U_f = 0,71 \text{ W/m}^2\text{K}$

Air permeability up to Class 4

Watertight up to Class 1650

Wind resistance up to Class C5

Antiburglary up to RC3

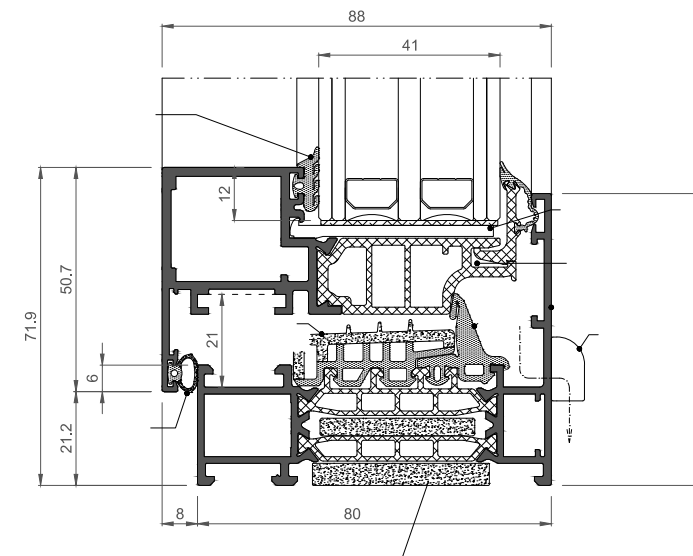
Soundproofing up to 46db



## Sistemi

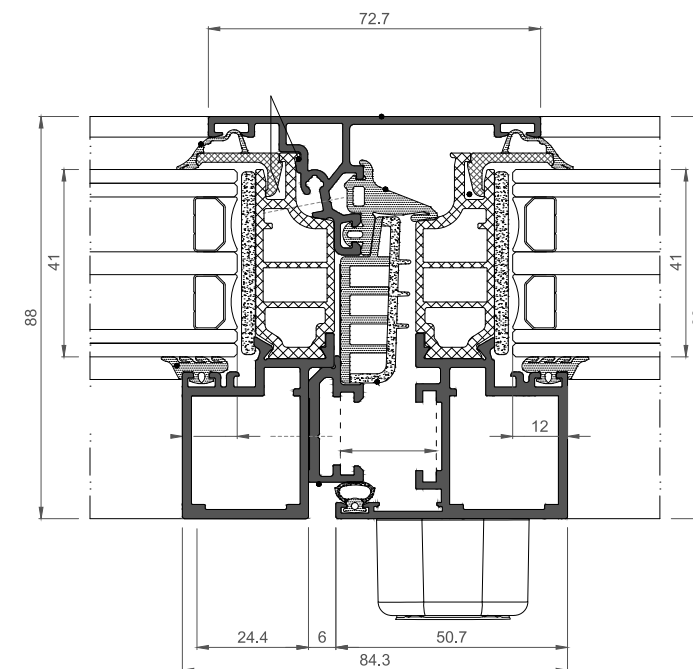
Systems

Sistema anta a scomparsa  
Retractable door system



## Nodo Centrale

Central node

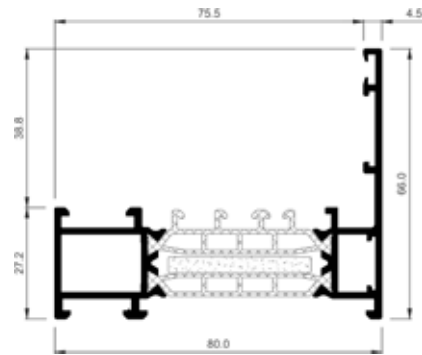


## Telai

Frames

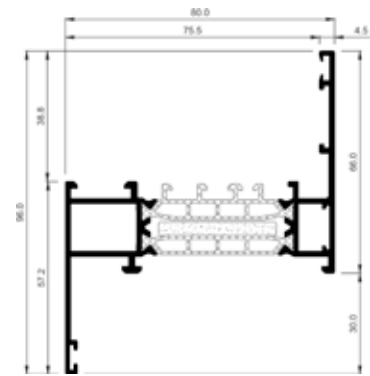
### Telaio ad L

Flat frame



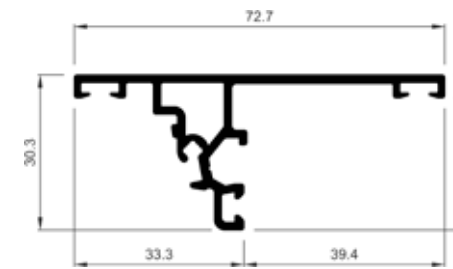
### Telaio a Z

Flat frame



## Riporto Centrale

Leaf

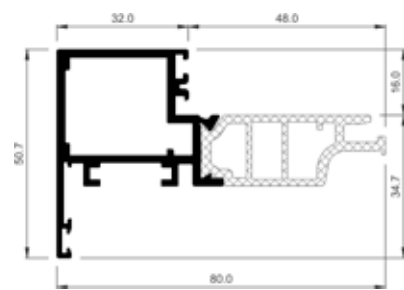


## Anta

Leaf

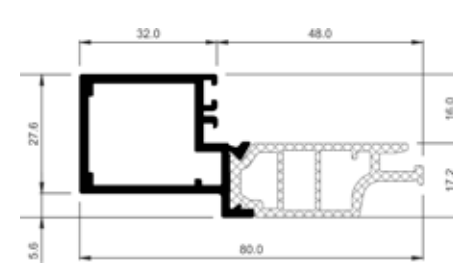
### Anta Principale

Minimal Door Leaf



### Anta Secondaria

Minimal Door Leaf



## Soglia Ribassata

Lowered Threshold

